

Regional Service Commission 8
Working Together...Growing Together
Annual Report 2013



Table of Contents

1. Message from Chairperson.....	1-2
2. Working Together....Growing Together.....	3
3. History of Regional Service Commission 8.....	4
4. Profile of Region.....	5-6
5. Governance and Administration.....	7-9
5.1 Member Communities	
5.2 Board Members	
5.3 Planning Review and Adjustment Committee	
5.4 Organizational Structure	
6. Service Provisions.....	10-17
6.1 Land Planning & Inspection Services	
6.2 Solid Waste Management	
7. Accomplishments and Challenges of 2013.....	18
8. Financial Information.....	18-23
8.1 RSC8 Funding	
8.2 Board Expenses	
8.3 RSC8 Fees	
8.4 Service Costs	
8.5 Funding/Grants	
9. Moving Forward.....	23
10. Contact Information.....	23
Appendix 2013 Auditor's Report	

1.0 Message from Chairperson

The Provincial Government created a total of 12 Regional Service Commissions around the province on January 1, 2013. Our region became known as Regional Service Commission 8 (RSC 8). This new commission replaced the former Solid Waste Commission and the Royal District Planning Commission that were in place for a number of years.

The mandate of the 12 commissions is

- ✓ Solid waste management
- ✓ Local land use planning
- ✓ Regional planning
- ✓ Regional policing collaboration
- ✓ Regional emergency measures planning
- ✓ Regional sport, recreation, and cultural infrastructure planning and cost sharing

The board of RSC 8 is made up of ten directors from the area of Queens and Kings County. Based on a formula provided by the Provincial Government, we have six directors from Local Service Districts (LSDs) and four directors from municipalities. The mayors are mandated to the board and the LSD representatives were elected by their peers. An election is held for board members to elect a chairman and vice chair.

The first year of operation of the commission was a challenging and rewarding year. We brought a diverse group of individuals to the board and embraced the concept of working together as members at large instead of the areas we represented. To reinforce this, we held a very productive team session on a weekend early in the year.

Under the direction of our executive director and staff we saw three hundred and forty eight building permits issued at a value of \$31,000,000.00. This represents a small decrease from 2012.

In order to keep with the government's strategy of collaboration and sharing, the chairpersons of the 12 Regional Commissions meet with the Department of Local Government in Fredericton three or four times a year to share ideas and learn from each other's experience.

A number of committees were formed by the commission to report to the board. The solid waste committee, budget committee and finance committee are the most active. In order to better manage our expenses, we are keeping the number of committees to a minimum and only creating them as need be.

In 2013 RSC 8 received an Environmental Trust Fund grant to study the solid waste handling facilities and transfer station options. This is required as the contracts with Sussex Waste Management and the Westmorland Albert Facility are expiring in 2014 and 2015 respectively. The recommendations of this study will require a lot of work by our committees; however, this may provide some great opportunities in the future.

In 2013 Lloyd Marshall, director representing the parish of Kars, passed away. He was a highly respected member of our commission. In October, we were all surprised when our executive director gave notice of resignation in order to move to western Canada with her family. By the end of 2013 we had advertised and filled the position with current executive director Steve Roberts who started his term on January 6, 2014.

My goal, as chair of the commission, is to continue to work and grow together with our partners for the good of every citizen living and working within the boundaries of RSC 8.

As chair I would like to say thank-you for the support of the board of directors, and staff of the commission.

Respectfully yours,

Jim McCrea
(Chairman)

2.0 Working Together....Growing Together

As the Regional Service Commissions mature, the underlying factor contributing to their success will certainly be the ability to cooperate on regional issues. For this reason, the obvious theme of this year's report, "Working Together...Growing Together," speaks to the need to not only work together but to mature and grow together.

Regional Service Commission 8 recognizes the importance of building a spirit of cooperation and creating a culture of engagement for its member communities. It believes that in order to be successful it has to have a good working relationship with its members and this relationship will need to be built on respect, which must be mutual and be reciprocated by both parties. Regional Service Commission 8 will be a service organization that puts the interests and needs of its member communities at the forefront. Every citizen of the region will have the opportunity to be heard and involved in the process, noting that consultation is a means to ends process and people need to be involved throughout.

Regional Service Commission 8 currently administers land planning and solid waste services throughout the Region and has been mandated to broaden the scope of its services to include policing, recreation, emergency measures and any other regional issues that benefit its member communities. If we are to truly think regionally on these issues and find efficiencies to the benefit of our members, cooperation will once again need to be the driving factor that delivers success. We must be able to put past outcomes behind us and focus on the future for the collective betterment of all municipalities and local service districts in our region.

For too long, we have tried to use a top down approach with little opportunity for the people of the region to have their say. It is time to turn the corner and take a different approach where ideas come from the people of the region. For who knows better the needs of the region than the people who call it home, it seems like an obvious gesture of good faith to take the time to listen.

The Board and staff of Regional Service Commission 8 are committed to this approach and are willing and eager to build relationships in our member communities. Relationships built on respect, commitment and action, mindful of the fact that it is the people that matter most.

We extend the invitation to our members to make the same commitment in order to enhance and improve the lives of the people in our region as we "work together and grow together."

3.0 History of Regional Service Commission 8

As you may be aware the Province of New Brunswick has restructured the Planning and Solid Waste Commissions across the Province, merging these services and adding some others to the new Regional Service Commissions, twelve in all across the province. These new Commissions will better enable communities across New Brunswick to work together and share services to meet their common needs. The Commissions will serve communities and be governed by them, creating direct accountability to taxpayers in all regions.

One of the primary challenges which lead to the establishment of these commissions is that there is no existing structure to enable communities to communicate with one another, to plan and prioritize from a regional perspective, collaborate on projects, cost-share on service delivery, and make mutually-beneficial decisions on investments, or share expertise. To address these challenges, Regional Service Commissions were established to enable the needed collaboration and cooperation between communities, ensuring that Municipalities, Rural Communities and Local Service Districts are better positioned to meet the service needs of residents and to benefit from collective efforts to build and sustain stronger regions.

As a result of these changes, the Royal District Planning Commission and the Kings County Solid Waste Commission were dissolved and on January 1, 2013 these services were provided by the newly formed Regional Service Commission 8. The new Commission continues to administer land planning, building inspections and solid waste services. Broadening the scope of services is a continuum as Regional Service Commission 8 brands itself as the “go to” organization for regional issues.

The new Regional Service Commission 8 office is located at the former location, 49 Winter Street, Sussex, New Brunswick.

4.0 Profile of Region

Located in the south-central part of the province, the Regional Service Commission 8 (RSC8) has an area of 4009 square kilometers.

The RSC8 region is characterized by suburban/rural communities. It includes two towns (the *Town of Hampton and the Town of Sussex*), two villages (*The Village of Norton and the Village of Sussex Corner*), and 14 local service districts (LSD) (*Brunswick, Cardwell, Hammond, Hampton, Havelock, Johnston, Kars, Norton, Springfield, Studholm, Sussex, Upham, Waterford, Wickham*).

The RSC8 region has a total population of 30,920 and combined assessed property values of *approximately \$2.5 billion*. Currently, *62 per cent* of the population resides within the unincorporated areas and *38 per cent* of the population resides within municipalities.

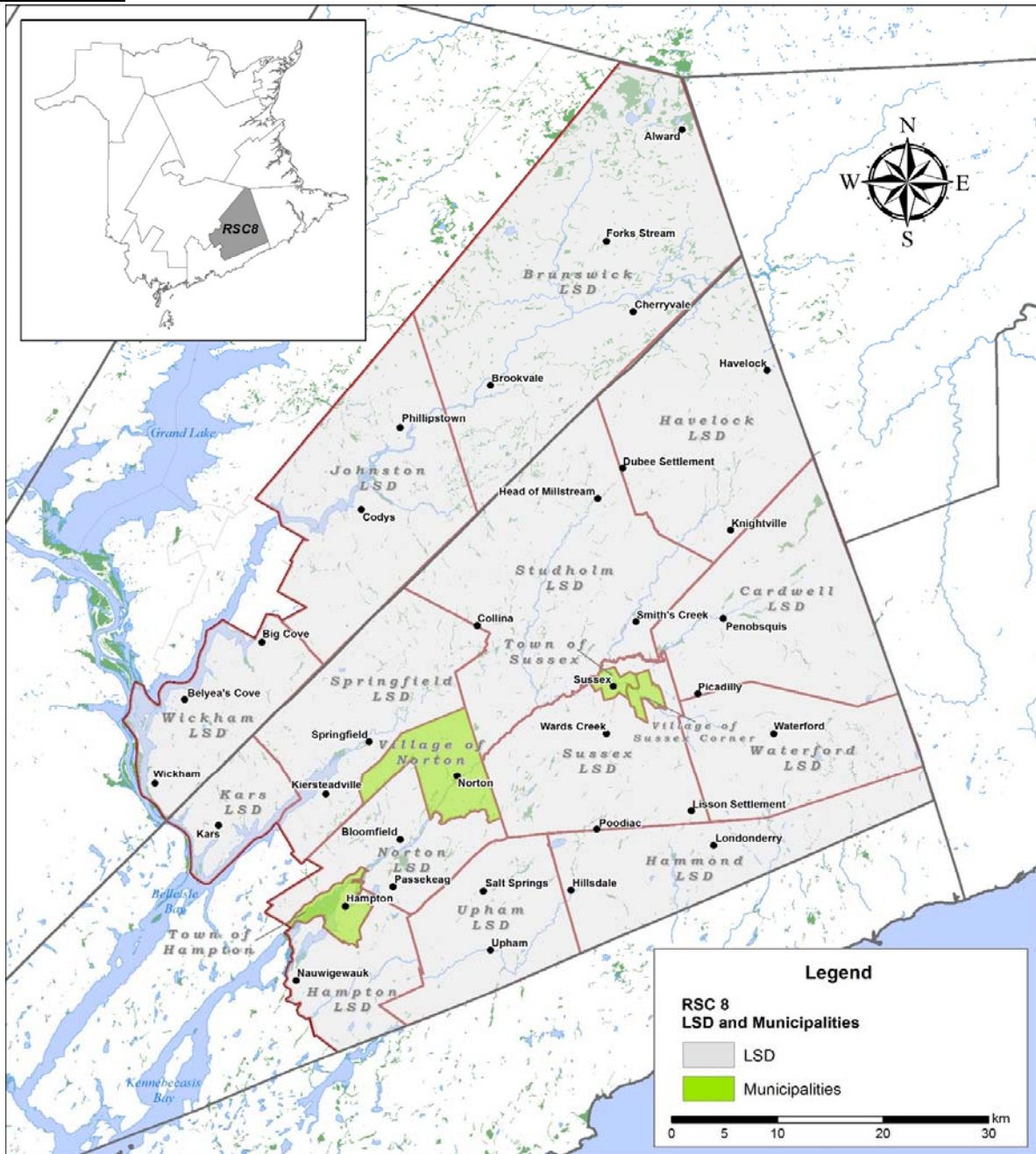
In terms of the two official languages, *97 per cent* reported *English* as their mother tongue, with *one per cent* reporting *French* as their mother tongue.

80 per cent of the working population lives and works within this region. The economic base of this region is supported primarily through natural resource-based industries (including forestry, mining and natural gas production), agriculture, tourism, service industries and retail businesses.

Communities within this region are cost sharing on solid waste through the RSC8 (*formally known as Kings County Solid Waste Commission*). As for economic development, the majority of the region is currently served by Enterprise Fundy, with two LSDs served by Enterprise Central NB. Presently the LSDs, the Village of Norton and the Village of Sussex Corner receive land use planning services from Regional Service Commission 8. The Town of Sussex and Hampton provides its own land use planning services.

Policing in the region is provided by the RCMP through various agreements. In terms of fire prevention and suppression services, there are currently *10 separate fire departments* (three municipal, and seven LSD serving the region. Exhibit 4.1 provides a detailed map of the region.)

Exhibit 4.1



5.0 Governance and Administration

5.1 Member Communities

Town of Hampton	Village of Norton	Village of Sussex Corner
Waterford	Town of Sussex	Hammond
Springfield	Cardwell	Brunswick
Wickham	Hampton	Upham
Johnston	Studholm	Sussex
Kars	Havelock	Norton

5.2 Board Members

James McCrea, Chair	Local Service District Representative
Karin Boye, Vice Chair	Local Service District Representative
John Henderson	Local Service District Representative
Bryant Dunfield	Local Service District Representative
Frank Jopp	Local Service District Representative
Tammie Spraggett	Local Service District Representative
Marc Thorne	Mayor of the Town of Sussex
Ken Chorley	Mayor of the Town of Hampton
Juliana Booth	Mayor of the Village of Norton
Steven Gillies	Mayor of the Village Sussex Corner

Legislation provides that alternates may attend in the event that an LSD representative or the Mayor of the Municipality cannot attend a meeting. The following is a list of alternates:

Tony Pollock	Local Service District Representative
Ben Whalen	Deputy Mayor of the Village of Sussex Corner
Ann-Marie Snyder	Deputy Mayor of the Village of Norton
Gary Crossman	Deputy Mayor of the Town of Hampton
Ralph Carr	Deputy Mayor of the Town of Sussex

5.3 Planning Review Adjustment Committee

The Planning Review and Adjustment Committee (PRAC) is appointed by Regional Service Commission 8 to carry out advisory and decision-making functions as specified under the provincial *Community Planning Act*. These responsibilities include, but are not limited to, decisions or recommendations on development applications and land use planning advice to either the Municipal Council or the Minister of Environment and Local Government.

The decisions and recommendations made by this Committee are guided by the provisions of the *Community Planning Act*, and any regulations and by-laws

thereunder. The deliberations of the Committee are supported by the analysis and advice of professional staff of RSC8. The RSC 8 PRAC serves the Villages of Norton and Sussex Corner as well as the 14 Local Service Districts within Region 8.

PRAC Members

Susan Northrup
David Henderson
Robert Bates

Marylou Wiggins
Rick Horton
John Blenis

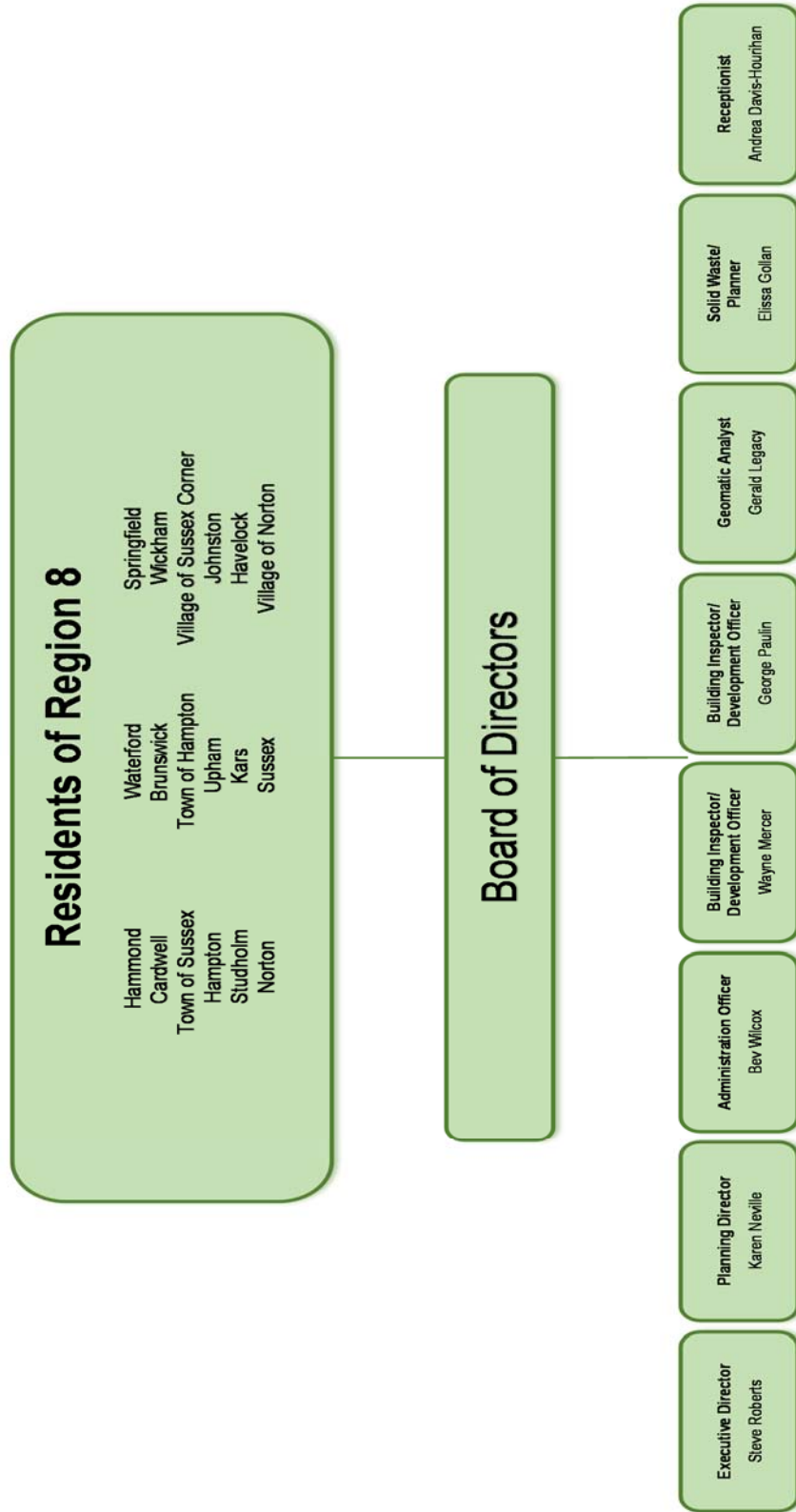
James McCrea
Reace Black
Juliana Booth

5.4 Organizational Structure

The Board of Directors of RSC 8 is made up of ten directors from the area of Queens and Kings County. Based on a formula provided by the Provincial Government, there are six directors from Local Service Districts (LSDs) and four directors from municipalities. The mayors are mandated to the board and the LSD representatives were elected by their peers. An election is held for Board members to elect a chairman and vice chair that act as the executive. The Executive Director reports to the Board and all staff of the Regional Service Commission 8 report to the Executive Director. Staff is comprised of a planning director, solid waste coordinator, office administrator, 2 building inspectors, GIS specialist and a receptionist. Exhibit 5.1 depicts the organizational structure, recognizing the importance of its members at the highest level of the organizational chart.

Exhibit 5.1

Regional Service Commission 8 Organizational Chart



6.0 Service Provisions

6.1 Land Planning and Inspection Services

According to the *Regional Service Delivery Act*, Regional Service Commission's (RSCs) are responsible for providing local land use planning services to all of its members that are local service districts and can enter into an agreement to provide such a service to its municipal members.

Regional Service Commission 8's (RSC8) powers and responsibilities with respect to land use planning are outlined in the *Community Planning Act*. These generally include:

- Development and administration of rural plans, building permits and subdivision by-laws
- Approval of new subdivisions
- Planning advice to municipalities, rural communities, and the Minister of Environment
- Issuance of building permits
- Inspection of new development and buildings

RSC8 also provides education to municipal councils, rural community committees and the general public with respect to land use and environmental issues, planning, and the National Building Code. It liaises with community representatives and develops partnerships with the communities it serves.

Regional Service Commission 8 provides Local Land Use Planning Services to the following communities:

Municipalities

Village of Sussex Corner

Village of Norton

Local Service Districts

Cardwell

Johnston

Sussex

Brunswick

Kars

Wickham

Hammond

Norton

Waterford

Hampton

Springfield

Upham

Havelock

Studholm

During 2013, RSC8, along with all of the newly created RSCs, worked hard to ensure that the transition to the new RSC structure was as seamless as possible and that service to the public and clients was not disrupted. In an attempt to ease the transition, RSC8 entered into an agreement with RSC 11 to provide building inspection and local planning services to the Village of Gagetown and the Local

Service Districts (LSDs) of Waterborough and Cambridge. This agreement was entered into based on the fact that the Village of Gagetown Council and LSD Advisory Committees of Waterborough and Cambridge, located within the boundaries of RSC 11, as defined by *Region Boundaries Regulation –Regional Service Delivery Act*, voted to continue to receive local planning and building inspection services from RSC8.

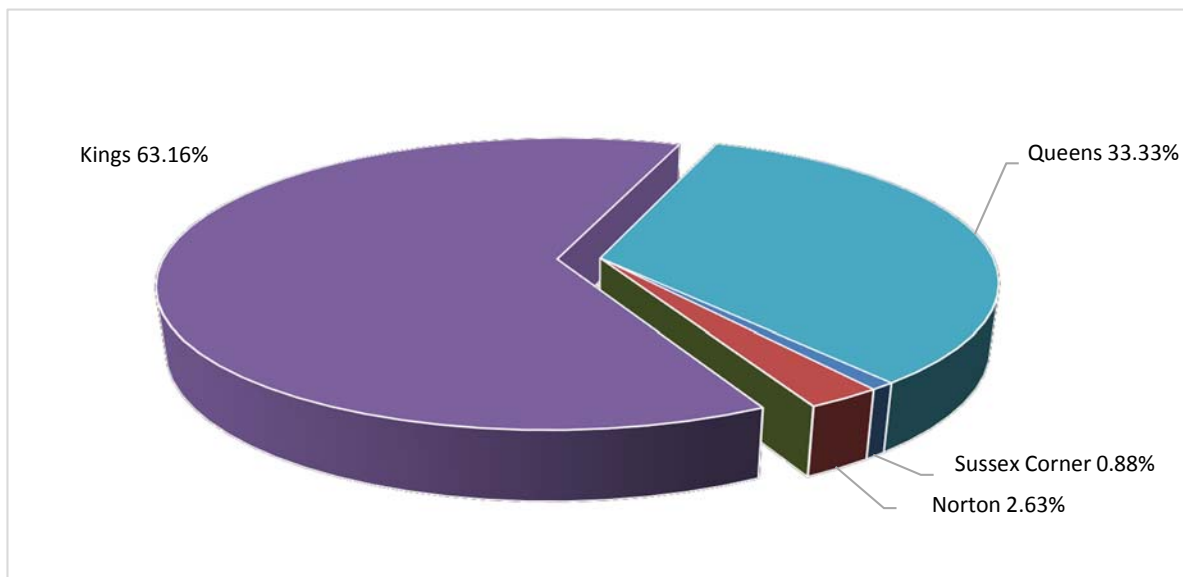
While technically not within the boundaries of RSC8, due to the fact that RSC8 provided building inspection and local planning service to the Village Gagetown and the LSDs of Waterborough and Cambridge, the values for building permits and subdivision creation will be included in the 2013 annual report.

Subdivision Development

Subdivision is the process of altering legal property boundaries. It usually involves the dividing of a property into smaller parcels of land. It can also include the realignment of existing property lines or the consolidation of one or more properties into a single parcel. RSC8 staff are responsible for overseeing and granting approvals for the subdivision of land. While staff is ultimately responsible for subdivision approval, some plans of subdivision require additional approval from the Planning Review and Adjustment Committee. These types of plans of subdivision include those that included the creation of public roads, require variances to lot size, or create lots that do not front on a public road.

In 2013, RSC8 approved a total of 87 subdivisions, involving the creation of 114 building lots. The total number of subdivision approvals represents a 0.08% increase from the subdivision approvals for the same geographic area in 2012, and the number of building lots in 2013 was one building lot less when compared to 2012.

2013 Distribution of New Lots



For a breakdown of the number of subdivisions and lots created please refer to Exhibit 6.1.

Exhibit 6.1			
2013 Subdivision Approvals			
Location	No. of Subdivisions	No. of Building Lots	Percent of Total Lots
<u>Villages</u>			
Sussex Corner	1	1	0.88%
Norton	3	3	2.63%
Gagetown	2	0	0.00%
TOTAL VILLAGES	6	4	3.51%
<u>Local Service Districts (LSDs)</u>			
<u>Kings</u>			
Cardwell	8	10	8.77%
Hammond	2	2	1.75%
Hampton	12	15	13.16%
Havelock	2	4	3.51%
Kars	3	4	3.51%
Norton	3	3	2.63%
Springfield	5	8	7.02%
Studholm	11	12	10.53%
Sussex	8	10	8.77%
Upham	1	1	0.88%
Waterford	3	3	2.63%
Total Kings LSDs	58	72	60.53%
<u>Queens</u>			
Brunswick	1	5	4.39%
Cambridge	2	4	3.51%
Johnston	6	5	4.39%
Waterborough	11	21	18.42%
Wickham	3	3	2.63%
Total Queens LSDs	23	38	33.33%
TOTAL LSDs	81	110	93.86%
GRAND TOTAL	87	114	100%

Building Activity

Obtaining a building permit ensures that a development is in conformity with building regulations and bylaws as well as the National Building Code. Building permits are issued for the protection of the property owner and for the safety of future property owners and occupants. Since June of 2002, following the adoption of a supplementary building regulation by the Provincial Government, structural building inspection service have been provided to all of the rural areas of the Province.

In 2013 RSC8 issued 348 building permits, 10% less than the 388 permits issued in 2012. The total value of construction was \$31 million which is an increase from the total value of construction of \$28.4 million in 2012. Exhibit 6.2 provides a breakdown of construction activity by sector.

Exhibit6.2			
Building Activity by Sector – 2013			
TOTAL BUILDING PERMITS	Building Permits	Value of Construction	Percent of Total
Residential (including accessory buildings)	311	16,776,935	54.01%
Agricultural	9	985,000	3.17%
Commercial	10	421,000	1.36%
Public Buildings	14	11,720,500	37.73%
Industrial	4	1161000	3.74%
GRAND TOTAL	348	31,064,435	100.00%

Of the 311 Residential building permits issued in 2013, 87 of those were for new housing starts. New housing starts includes new single family homes, installation of mobile homes and seasonal residential development. The construction value of those 87 permits was \$12,916,020 which compares to the 94 building permits valued at \$10,956,000 issued in 2012 for new housing starts.

Exhibit 6.3 provides a detailed breakdown of 2013 construction in individual Local Service Districts (LSDs) and Villages.

Exhibit 6.3					
2013 Building Activity (compared with 2012)					
Location	2013			2012	
	Building Permits	Value of Construction	Percent	Value of Construction	Percent
<u>Kings County</u>					
Sussex Corner Village	18	\$719,847.00	2.32%	\$1,175,800.00	4.14%
Norton Village	25	\$2,958,555.00	9.52%	\$427,500.00	1.51%
Cardwell	29	\$782,485.00	2.52%	\$10,284,800.00	36.21%
Hammond	8	\$253,200.00	0.82%	\$230,500.00	0.81%
Hampton	27	\$1,796,500.00	5.78%	\$1,479,100.00	5.21%
Havelock	12	\$1,118,085.00	3.60%	\$2,057,000.00	7.24%
Kars	12	\$284,000.00	0.91%	\$265,000.00	0.93%
Norton	9	\$822,000.00	2.65%	\$1,004,000.00	3.53%
Springfield	27	\$913,863.00	2.94%	\$1,282,500.00	9.87%
Studholm	41	\$2,780,000.00	8.95%	\$2,804,050.00	3.79%
Sussex	37	\$3,455,400.00	11.12%	\$1,077,650.00	4.52%
Upham	5	\$201,000.00	0.65%	\$1,558,700.00	5.49%
Waterford	6	\$469,000.00	1.51%	\$469,000.00	1.65%
Total	256	\$16,553,935.00	53.29%	\$9,310,500.00	84.91%
<u>Queens County</u>					
Gagetown Village	12	\$407,500.00	1.31%	\$1,109,000.00	3.90%
Brunswick	10	\$219,500.00	0.71%	\$231,000.00	0.81%
Cambridge	14	\$624,000.00	2.01%	\$927,200.00	3.26%
Johnston	17	\$1,403,500.00	4.52%	\$774,000.00	2.73%
Waterborough	30	\$11,662,000.00	37.54%	\$574,500.00	2.02%
Wickham	9	\$194,000.00	0.62%	\$671,000.00	2.36%
Total	92	\$14,510,500.00	46.71%	\$5,333,400.00	15.09%
GRAND TOTAL	348	\$31,064,435.00	100.00%	\$35,199,500.00	100.00%

Building Permits for Electrical

Separate building permits are issued for electrical upgrades and electrical changeovers for existing structures in cases where no structural building activity is taking place. These Building Permits for Electrical Only are forwarded to Public Safety before a wiring permit is issued to the electrician. A total of 124 electrical building permits were issued during the year.

Status of Rural Plans

Village of Gagetown Rural Plan Review

The review of the Village of Gagetown Rural Plan was completed in 2013. Elissa Gollan was the lead planner on this project.

Village of Sussex Corner

A review of the Village of Sussex Corner Rural Plan began in 2013. Karen Neville has been the lead planner on this project. Council, along with Karen, is very eager to complete this review. In addition to the review of the Rural Plan, the Building and Subdivision By- laws will likely be amended as a result of discussion related to the Rural Plan review. These amendments will take place upon the completion of the Rural Plan review.

Other Initiatives

The following is a brief overview of some of the initiatives or activities undertaken by the RSC8 staff that are in addition to ongoing tasks defined under the *Community Planning Act* including, the preparation of Rural Plans, and the processing of applications for rezoning, subdivision, variances and adjustments, rural plan enforcement, and the issuing of building permits and related inspections.

- RSC8 staff meets with our municipal partners on request or as warranted. These meetings offer an opportunity for RSC8 staff to meet with the Council to answer general questions and cultivate public relations. These meetings may also be specific to an issue of interest or concern including a development, a Rural Plan Amendment, or by-law enforcement, or a general public information session.
- RSC8 staff serves on the Technical Review Committees established to review Environmental Impact Assessments. In 2013, staff submitted comments on the McCully Phased Environmental Impact Assessment application.
- The Planning Director regularly attends meetings of the Provincial Planning Directors. This group includes the Planning Directors from the RSCs across the province, as well as, several larger urban municipalities. This forum allows an opportunity to “share notes” on matters of mutual interest and to regularly liaise as a group with staff of the Department of Environment and Local Government, including the Deputy Minister. Of note, the Planning Directors have had ongoing discussions with provincial staff regarding the *Community Planning Act* review, revisions to the provincial wetland regulation, the development of Regulations under the *New Brunswick Building Code Act*, and a variety of procedural matters related to the implementation of the *Community Planning Act*.
- Over the course of the past year, RSC8 staff have presented at or participated in a variety of forums that aided in the exchange of knowledge and information with the public and peers.

- In order to stay in touch with issues at a Provincial and Maritime level, Planning Commission staff participate in their respective professional associations in a variety of capacities.
- Elissa Gollan is member of New Brunswick Association of Planners education committee. The purpose of the committee is to identify and organize training opportunities for New Brunswick planners, as well as planners throughout the Maritimes.
- George Paulin is the Zone 6 Representative on the Executive of the New Brunswick Building Officials Association.
- The 2014 Canadian Institute of Planners Conference, *People Matter*, is being held in Fredericton. Elissa Gollan and Karen Neville are members of the organizing committee for this national conference.

6.2 Solid Waste Services

RSC 8 is also tasked with providing a solid waste disposal service to all its members. These services are provided to the Town of Sussex, Villages of Sussex Corner and Norton, and the LSD's of Norton, Hammond, Johnston, Springfield, Kars, Wickham, Sussex, Havelock, Studholm, Brunswick, Upham and Cardwell. While both the Town and LSD of Hampton are within Region 8's boundaries, they do not currently receive our solid waste services. It should be noted that RSC 8 is not responsible for residential waste *collection*. Contracts with haulers are arranged by the municipality, or in the case of LSD's, by the Province.

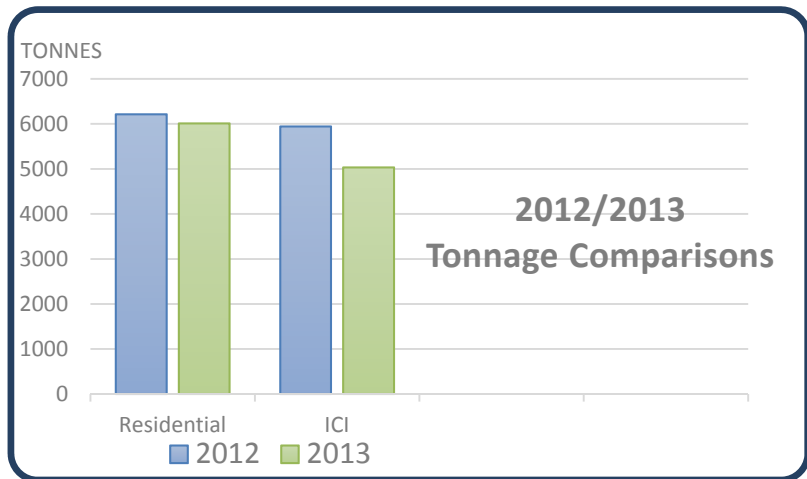
In 1995, a contract between the waste commission of the time and Westmorland-Albert Solid Waste began and since then our waste has been trucked to this site in Moncton. At this time, the Sussex Transfer Station was constructed and began operation by Sussex Waste Management. In 2001, the two-bag wet/dry (green/blue) sorting program was implemented in our service area and the transfer station expanded to meet these needs of this program. All waste generated by RSC 8 members is transported to the Transfer Station where it is divided into green/blue streams and shipped to Westmorland-Albert, where it is further processed at sorting stations and recycled as possible.

Both the contract with Westmorland-Albert Solid Waste and Sussex Waste Management are near completion. In 2013, RSC 8 (in partnership with RSC 12) applied and received an Environmental Trust Fund grant from the Province of New Brunswick. This grant was able to support the *Solid Waste Transfer Station Opportunity Analysis*, conducted by Stantec. This analysis will look at what alternative options may be available to RSC 8 moving forward. This study will consider alternative haulage options, transfer and disposal arrangements, as well as look at overall strategies for waste management in our region over the next twenty years. This analysis is expected to be completed by spring of 2014.

Throughout 2013, RSC 8 carried out many of the programs initiated by the previous Kings County Region Solid Waste Commission. These programs included:

- Two very successful Household Hazardous Waste Collection days (spring and fall)
- Two well utilized Residential Waste Free Drop-Off Events (spring and fall)
- Three large Illegal Dumping Site clean-ups.
- Community members of Region 8 diverted over a ton of batteries from landfill with our twenty-two (22) free residential battery recycling depots.
- Support for a number of community clean-ups and events.

The tonnage numbers weighed in at Sussex Waste Management for 2013 were comparable to those of 2012. Residential waste saw a slight decrease of approximately 200 tonnes while a more notable decrease was observed for Industrial, Commercial and Institutional (ICI) waste. There was a decrease of approximately 900 tonnes of ICI waste. This decrease could be a result of a number of factors and we will continue to monitor tonnage data in 2014.



We look forward to continuing these programs and further building upon them. We strive to provide for the efficient, economical and environmentally friendly disposal of solid waste in our Region.

Financial Information

In 2013, RSC 8 in partnership with RSC 12, received an Environmental Trust Fund grant of \$65,000. This grant was used to hire Stantec LTD to complete an analysis on the opportunities each Commission may have moving forward, as each has contracts with their transfer station operators expiring.

Looking Forward

An application was submitted for a 2014 Environmental Trust Fund grant to help support our *RSC 8: Let's Educate* campaign. If received, RSC 8 plans to launch a number of public education and awareness campaigns, along with investing into our programs and equipment to ensure everything is up-to-date.

7.0 Accomplishments

2013 was a year of change, the province of New Brunswick restructured the Planning and Waste Commissions across the province, merging these services and adding some others to new Regional Service Commissions (RSCs). As a result of this restructuring, what was once the Royal District Planning Commission now had become Regional Service Commission 8 (RSC8). In becoming Regional Service Commission 8, the staff of RSC8 was faced with a number of challenges.

In 2013, RSC8 was faced with a change in service boundaries, this meant saying good-bye to a number of communities and one valued employee, Brian Shannon. Brian had been with the Royal District Planning Commission since its inception in 1998, where he served in the capacity of Building Inspector and Development Officer. Due to this change in service area, Brian is now employed by the Fundy Regional Service Commission. With the change in service boundary and loss of employee meant a reallocation of staff responsibilities.

In addition, RSC8 was faced with the undertaking of providing new services such as solid waste. While providing solid waste services was new, all staff, in particular Elissa Gollan, took on this challenge without hesitation.

While 2013 was a year of change, and some may say challenge, the staff of RSC8 worked diligently, and continues to do so, to ensure that the transition to the new RSC structure was as smooth as possible and that service to the public and clients was not disrupted.

Branding and promoting the new model was also a challenge as the residents of the area were a little resistant to the change. The Board and staff of RSC8 have worked hard to sell the benefits and need for change and continue to promote RSC8 as the “go to,” organization for regional issues.

8.0 Financial Information

8.1 Funding

Under the Regional Service Commission, each member community pays for the services they receive through one service provider rather than a range of providers.

Regional Service Commission 8 does not have the authority to tax service users. Municipalities within our district are invoiced directly on a quarterly basis for the services they receive. The Province is also invoiced quarterly for the services provided to Local Service Districts within Region 8.

The annual audited financial statements for 2013 have been provided by Turnbull & Kindred CGA Professional Corp. The 2013 audit report is attached to this annual report.

8.2 Board Expenses

Regional Service Commission 8 -Directors

Submitted and approved expenses

Jan. 01, 2013 to December 31, 2013

James McCrea, Chair

Attends: Board and Provincial meetings also attends Committee meetings

Per Diem	\$6,260
Tech Allow	\$1,440
Kilometers	\$1,845
Lodging	\$0
Meals	<u>\$281</u>
Total	\$9,825

Karin Boye, Vice-Chair

Attends: Board meetings and Committee meetings

Per Diem	\$3,325
Tech Allowance	\$1,440
Kilometers	\$879
Lodging	\$0
Meals	<u>\$276</u>
Total	\$5,920

Juliana Booth

Attends: Board meetings and Committee meetings

Per Diem	\$2,120
Tech Allowance	\$1,440
Kilometers	\$379
Meals	<u>\$0</u>
Total	\$3,939

Ken Chorley

Attends: Board meetings and Committee meetings

Per Diem	\$1,900
Tech Allowance	\$1,440
Kilometers	\$361
Meals	<u>\$0</u>
Total	\$3,701

Bryant Dunfield

Attends: Board meetings

Per Diem	\$1,080
Tech Allowance	\$1,320
Kilometers	\$146
Meals	<u>\$0</u>
Total	\$2,546

Steven Gillies

Attends: Board meetings

Per Diem	\$1,565
Tech Allowance	\$1,440
Kilometers	\$49
Meals	<u>\$0</u>
Total	\$3,054

Frank Jopp

Attends: Board meetings and Committee meetings

Per Diem	\$2,920
Tech Allowance	\$1,440
Kilometers	\$531
Meals	<u>\$0</u>
Total	\$4,891

Lloyd Marshall

Per Diem	\$705
Tech Allowance	\$600
Kilometers	\$249
Meals	<u>\$0</u>
Total	\$1,554

Tammie Spaggett

Attends: Board meetings

Per Diem	\$1,865
Tech Allowance	\$1,440
Kilometers	\$275
Meals	<u>\$0</u>
Total	\$3,580

Marc Thorne

Attends: Board meetings and Committee meetings

Per Diem	\$1,820
Tech Allowance	\$1,440
Kilometers	\$41
Meals	<u>\$0</u>
Total	\$3,301

John Henderson

Attends: Board meetings

Per Diem	\$610
Tech Allowance	\$360
Kilometers	\$278
Meals	<u>\$0</u>
Total	\$1,248

8.3 Fees

RSC8 does not receive tipping fees directly as they are currently in a contract with Sussex Waste Management (SWM) to operate the Sussex transfer station. Under this contract RSC8 receives SWM's services and the cost of operation is retained by them through the tipping fees collected.

An amount of \$36,565 was received from Sussex Waste Management in 2013 for tipping fees in excess of the contract for the previous year. Also, received in tipping fees, was an amount of \$66,705 which goes towards administration costs.

Building permit fees and planning fees are collected on behalf of the member Municipalities and Local Service Districts within our region. These fees are returned to the members on a quarterly basis. The annual amounts returned for 2013 are as follows:

Municipality	Building Permit Fees	Planning Service Fees
Village of Sussex Corner	4,149	1,125
Village of Norton	15,442	2,825
Village of Gagetown	2,363	700
<u>Local Service Districts</u>		
Sussex	13,367	3,450
Hampton	9,795	4,900
Brunswick	975	100
Cardwell	5,397	3,375
Hammond	1,495	550
Havelock	4,135	925
Johnston	4,315	3,150
Kars	750	1,050
Springfield	5,363	2,275
Studholm	21,905	5,150
Waterford	2,275	1,475
Upham	2,570	1,050
Wickham	735	925
Norton	4,375	1,300
Cambridge	2,945	1,600
Waterborough	63,401	3,850
Total returned	165,752	39,775

8.4 Cost of services being provided by RSC8

The costs of services provided as per the 2013 audited financial statements;

Page 17 - Cooperative and regional Planning Services -	0
Page 18 – Solid Waste Services -	1,653,525
Page 19, 20 – Local Planning Services -	575,558
Page 21 – Corporate-	254,978

8.5 Funding

Environmental Trust Fund provided funding in the amount of \$33,226, these funds were used to conduct a study on the Sussex Transfer Station. The remainder of the funding will be received in 2014.

9.0 Moving Forward

The regional service model is one of the key features of the New Local Government System. This model will support the needed connectivity and cooperation between communities to ensure that both individual local governments and Local Service Districts are better positioned to meet the service needs of residents and to benefit from collective efforts to build and sustain stronger regions.

Regional Service Commission 8 will look to carry out its mandate under this new model by expanding its role in the Region. Building relationships in the Region will be a major goal of the commission as it looks to provide more services under its mandate going forward. The commission must deliver tangible benefits to the people of the Region through collaboration and cooperation.

Moving forward, we will continue to offer and improve on our current services while striving to expand our mandate to offer more services to our member communities.

10.0 Contact Information

Regional Service Commission 8
49 Winter Street
Sussex, New Brunswick
E4E 2W8

Telephone: (506) 432-7530

Toll free: 1-888-245-9155

Email: info@rsc8.ca

Website: www.rsc8.ca